



GRELA

Mobili componibili / Furniture and Cabinets _ Meubles et Armoires _ Schränke und Möbel

Finiture _ Finishes _ Finitions _ Afwerkingen

L

Laccato lucido
Glossy lacquered
Laqué brillant
Glänzend Lackiert



.09L



.17L



.21L



.22L

O

Laccato opaco
Mat lacquered
Laqué mat
Matt Lackiert



.09



.17



.21



.22

N

Laminato
Laminated
Stratifié
Holzlaminat



.03



.01



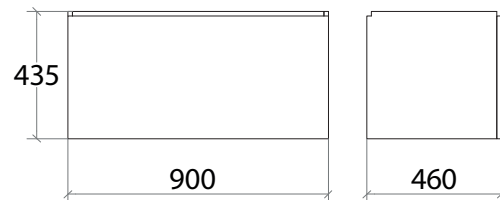
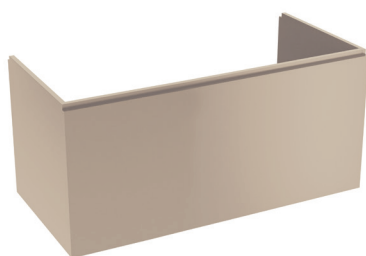
.02



.05






GRELA



8260

Base sospesa 900 mm con un cassettone push-pull

Base unit 1 drawer push-pull / Meuble bas avec 1 tiroir push-pull / Unterschrank 1 Schublade push-pull




cod. 8260		 dm ³		Laccato opaco Mat lacquered Laqué mat Matt Lackiert
EAN 8005049003304	25	211,5	1	

Peso e volume lordo / Gross weight and volume / Poids et volume brut / Bruttogewicht und Volumen

82601

Base sospesa 900 mm con un cassettone push-pull + cassetto interno

Base unit 1 drawer push-pull and internal drawer / Meuble bas avec 1 tiroir push-pull et tiroir intérieur / Unterschrank 1 Schublade push-pull und Innenschublade

cod. 82601		 dm ³		Laccato opaco Mat lacquered Laqué mat Matt Lackiert
EAN 8005049003144	25	211,5	1	

Peso e volume lordo / Gross weight and volume / Poids et volume brut / Bruttogewicht und Volumen



Made in Italy
Made in Italy
Made in Italy
Made in Italy

PULIZIA e MANUTENZIONE

Pulire con un sapone neutro, applicare con un panno umido, strofinare leggermente, lasciar agire brevemente e quindi sciacquare con acqua. Infine lucidare con un panno morbido e asciutto. Per macchie di calcare pulire con una soluzione di acqua (80%) e aceto bianco (20%), per un'azione igienizzante aggiungere alla soluzione del bicarbonato di sodio. Asciugare sempre la superficie in modo da evitare le macchie derivanti dall'acqua.

Avvertenze: La resistenza alla corrosione al nichel-cromo si riduce sotto l'azione di acidi e composti alogenati (cloruri, bromuri, ioduri). Non utilizzare mai soluzioni a base di cloro (candeggina), detersivi o spugne abrasive. Evitare la ruggine causata da materiali esterni (ad es. paglietta di acciaio ecc.).

CARE and MAINTENANCE

Clean with a mild soap, apply with a damp cloth, rub lightly, leave it briefly and then rinse with water. Finally polish with a soft, dry cloth. To remove the limestone stains, clean with a solution of water (80%) and white vinegar (20%), to sanitize add baking soda. Always dry the surface in order to prevent stains caused by water. Warnings: The corrosion resistance of the steel is reduced by acids and halogen compounds (chlorides, bromides, iodides). Never use solutions containing chlorine (bleach), detergents or abrasive sponges. Prevent rust caused by external materials (eg. Scouring steel, etc.).