



SAETA

ACCESSORI _ Accessories _ Accessoires _ Accessoires

Sottile, discreta ma nel contempo di carattere. Realizzata in alluminio verniciato, disponibile nei colori di tendenza.

SAETA è perfettamente abbinabile alla serie **ACRUX** di **SAMO**.

A range of accessories and furniture characterized by an industrial style, suitable for modern and metropolitan environments.

SAETA perfectly complements the **ACRUX** series by **SAMO**.

Une série d'accessoires au style industriel, adaptée aux environnements modernes et urbains.

SAETA s'harmonise parfaitement avec la série **ACRUX** de **SAMO**.

Eine Serie aus Zubehör, Möbeln und Ergänzungselementen im Industrial-Stil, die sich für ein modernes und weltstädtisches Ambiente eignet.

SAETA passt perfekt zur **ACRUX**-Serie von **SAMO**

Finiture _ Finishes _ Finitions _ Afwerkingen

Verniciato bianco

Painted white
laqué blanc
Lackiertem Weiß



.09

Verniciato nero

Painted black
laqué noir
Lackiertem Schwarz



.23

Artic opaco

Artic matt
Mat Artic
Matt Artic



.90

Sailor blue opaco

Sailor blue matt
Mat Sailor blue
Matt Sailor Blue



.92

Grigio opaco

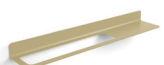
Grey matt
Mat gris
Matt Grau



.95

Sabbia opaco

Sand matt
Mat sable
Matt Sand



.98

Tortora opaco

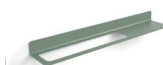
Tortora matt
Mat tortora
Matt tortora



.99

Sage opaco

Sage matt
Mat sage
Matt Sage



.73

Ambra opaco

Ambra matt
Mat ambra
Matt Ambra



.86

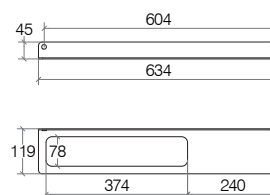
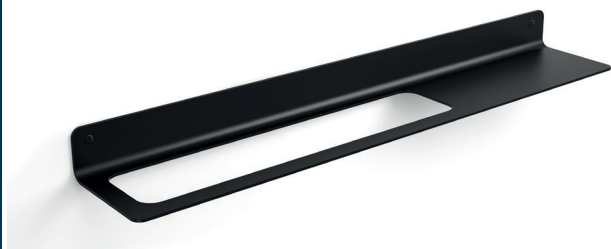





SAETA

51819

Supporto con mensola 634 mm, foro sx

Towel holder and accessories bar 634 mm, left hole / Etagère avec p.serviettes - support pour accessoires 634 mm, trou à gauche / Halter mit Ablage 634 mm Loch Links



cod. 51819				Verniciato nero Painted black Laqué noir Lackiertem schwarz
EAN 8057725061351	0,860	9,728	1	

Peso e volume lordo / Gross weight and volume / Poids et volume brut / Bruttogewicht und Volumen



Fissaggio a muro
Wall mounting with screws
Fixation murale par vis
Wandbefestigung mit Schraube



Made in Italy
Made in Italy
Made in Italy
Made in Italy

PULIZIA e MANUTENZIONE

Pulire con un sapone neutro, applicare con un panno umido, strofinare leggermente, lasciar agire brevemente e quindi sciacquare con acqua. Infine lucidare con un panno morbido e asciutto. Per macchie di calcare pulire con una soluzione di acqua (80%) e aceto bianco (20%), per un'azione igienizzante aggiungere alla soluzione del bicarbonato di sodio. Asciugare sempre la superficie in modo da evitare le macchie derivanti dall'acqua.

Avvertenze: La resistenza alla corrosione al nichel-cromo si riduce sotto l'azione di acidi e composti alogenati (cloruri, bromuri, ioduri). Non utilizzare mai soluzioni a base di cloro (candeggina), detersivi o spugne abrasive. Evitare la ruggine causata da materiali esterni (ad es. paglietta di acciaio ecc.).

CARE and MAINTENANCE

Clean with a mild soap, apply with a damp cloth, rub lightly, leave it briefly and then rinse with water. Finally polish with a soft, dry cloth. To remove the limestone stains, clean with a solution of water (80%) an white vinegar (20%), to sanitize add baking soda. Always dry the surface in order to prevent stains caused by water. Warnings: The corrosion resistance of the steel is reduced by acids and halogen compounds (chlorides, bromides, iodides). Never use solutions containing chlorine (bleach), detergents or abrasive sponges. Prevent rust caused by external materials (eg. Scouring steel, etc..).